

Liveable Homes can adapt to any visitor and any stage of your life.

Think of all the moments during the life of a home when easy access is an issue when:

- you're moving in new furniture
- an elderly grandparent comes visiting
- a pregnant woman's in the house
- someone has an injury

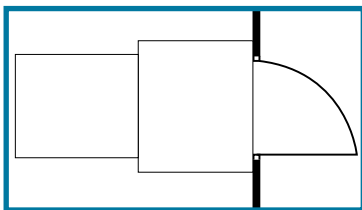
- a person with a disability visits
- there's a pram in the house
- an occupant has grown less mobile.

A thoughtfully designed home can easily accommodate all of these circumstances.

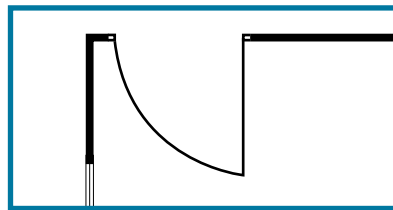
Key features of Liveable Homes.

Liveable homes are easy to move around in and easy to use. They are open-plan and are designed to maximise space in key areas of the home.

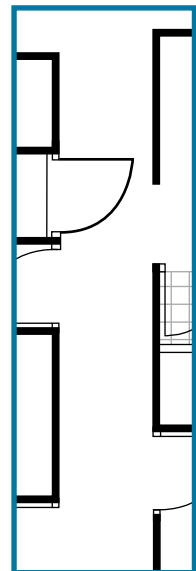
Wide flat level entry



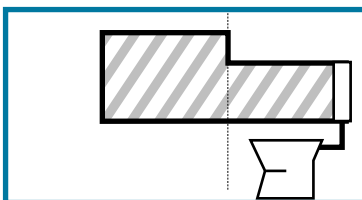
Wide door ways



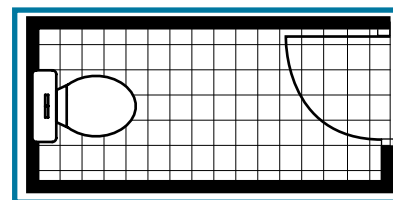
Wide hallways



Strong walls in bathroom and toilet



An easy-access toilet



www.liveablehomes.net.au

An easy-access shower

