

Internal doors and corridors

Performance Statement:	Internal doors and corridors facilitate comfortable and unimpeded movement between spaces.
Essential	<p>a. Doorways to rooms on the entry level used for living, dining, bedroom, bathroom, kitchen, laundry and sanitary compartment purposes should provide:</p> <ol style="list-style-type: none"> a minimum clear opening width of 820mm. See figure 8; and a level transition and threshold (maximum vertical tolerance of 5mm between abutting surfaces is allowable provided the lip is rounded or beveled). <p>b. Internal corridors/passageways to the doorways referred to in (a) should provide a minimum clear width of 1000mm. See figure 8a.</p>
Desirable	As for the Essential except replace (a) (i) with a minimum clear opening width of 850mm and (b) with a minimum corridor/passageway width of 1200mm. See figures 8 and 8a.

This information was sourced from the national Liveable Housing Design Guidelines produced by the National Dialogue on Universal Housing Design.

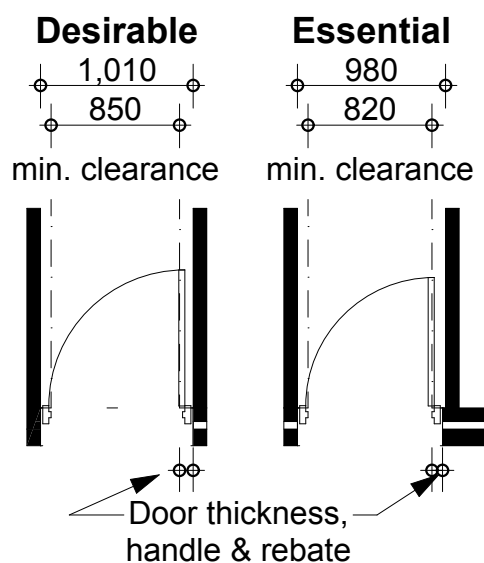


Figure 8. Ground (or entry) level door requirements

Note: In Western Australia
Use standard internal door sizes
of 870 & 920 to achieve a min.
clear opening of 820 & 870
respectively.

If using double doors it is
recommended that the essential
criteria be followed and at least
one door provides 820mm clear.

This information was sourced from the national Livable Housing Design Guidelines produced by the National Dialogue on Universal Housing Design.

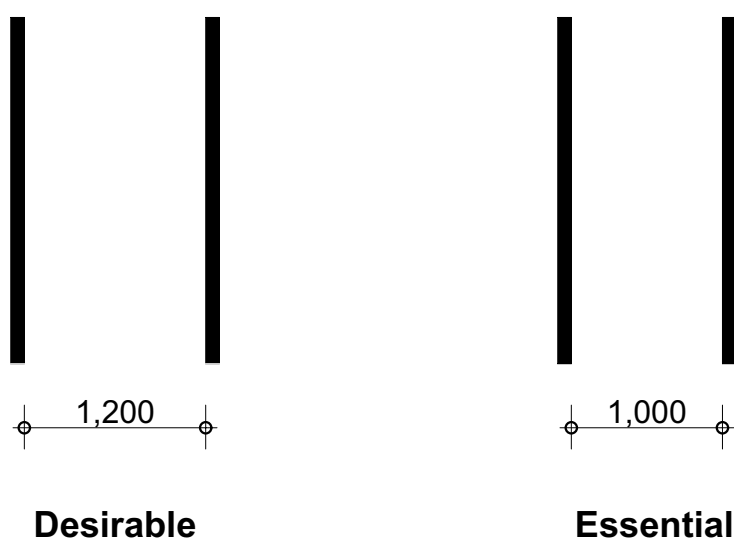


Figure 8a. Internal corridors

This information was sourced from the national Liveable Housing Design Guidelines produced by the National Dialogue on Universal Housing Design.