

Toilet

Performance Statement:	The ground (or entry) level has a toilet to support easy access for home occupants and visitors.
Essential	<p>a. Dwellings should have toilet on the ground (or entry) level that provides:</p> <ul style="list-style-type: none">i. a minimum clear width of 900mm between the walls of the bathroom if located in a separate room; andii. a minimum 1200mm clear circulation space forward of the toilet pan exclusive of the swing of the door. See figures 9, 9a and 9b. <p>b. If the toilet is located within the ground (or entry) level bathroom, the toilet pan should be located in the corner of the room to enable the installation of grabrails.</p>
Desirable	As for Essential except replace (a) (i) with a minimum clear width of 1200mm between the walls of the bathroom if located in a separate room. See figures 10 and 10a.

This information was sourced from the national Liveable Housing Design Guidelines produced by the National Dialogue on Universal Housing Design.



Figure 9. Toilet perspective

This information was sourced from the national Livable Housing Design Guidelines produced by the National Dialogue on Universal Housing Design.

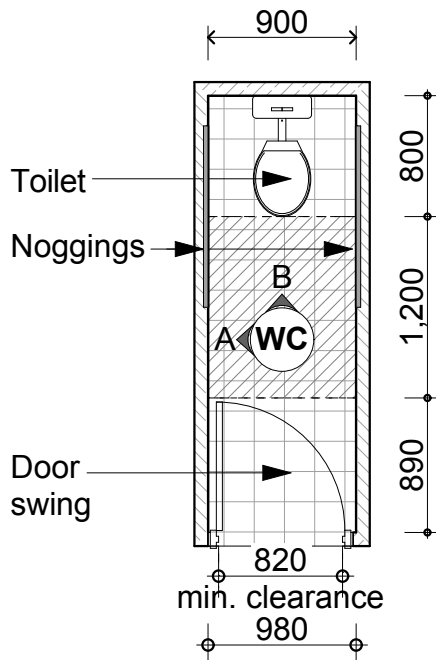


Figure 9a. Toilet - Essential
Layout and circulation space
Location of noggings

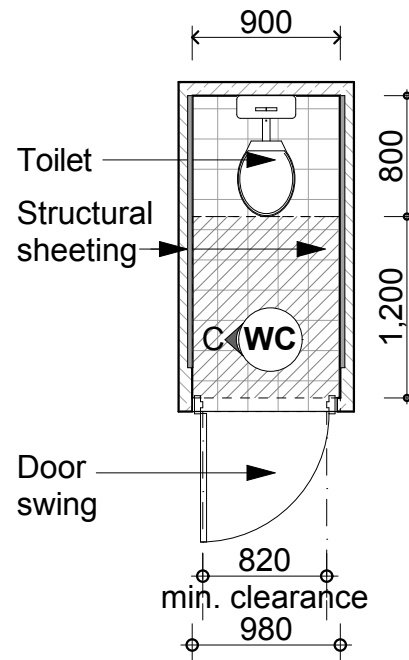


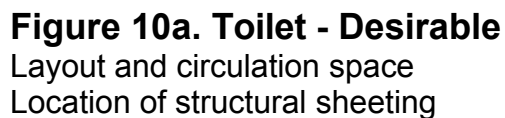
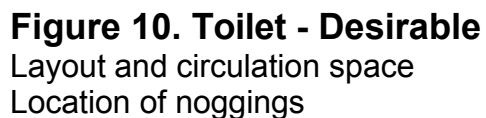
Figure 9b. Toilet - Essential
Layout and circulation space
Location of structural sheeting

Note: In Western Australia

Use standard internal door sizes of 870 & 920 to achieve a min. clear opening of 820 & 870 respectively.

Internal brickwork (solid) can be substituted for the framed walls and will omit the need for noggings/sheeting.

This information was sourced from the national Livable Housing Design Guidelines produced by the National Dialogue on Universal Housing Design.



This information was sourced from the national Livable Housing Design Guidelines produced by the National Dialogue on Universal Housing Design.