

Shower

Performance Statement:	The bathroom and shower is designed for easy and independent access for all home occupants.
Essential	<ul style="list-style-type: none">a. One bathroom should feature a slip resistant, hobless (step-free) shower recess. Shower screens are permitted provided they can be removed at a later date.b. The shower recess should be located in the corner of the room to enable the installation of grabrails at a future date. See figure 11.
Desirable	<p>As for Essential except that the hobless (step-free) shower recess described in (a) should -</p> <ul style="list-style-type: none">i. be located in a bathroom on the ground (or entry) level;ii. provide dimensions of 900mm x 900mm; andiii. provide a clear space of 1200mm x 1200mm forward of the shower recess entry. See figure 12 and figure 12a.

This information was sourced from the national Liveable Housing Design Guidelines produced by the National Dialogue on Universal Housing Design.



Figure 11. Shower perspective

This information was sourced from the national Livable Housing Design Guidelines produced by the National Dialogue on Universal Housing Design.

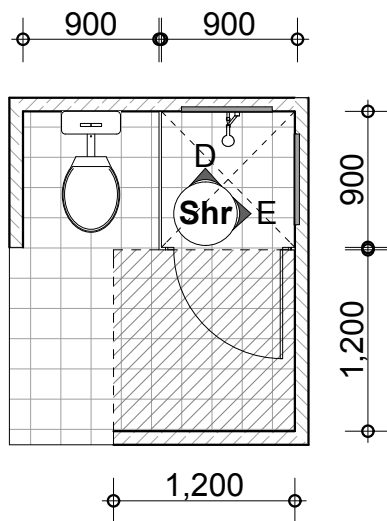


Figure 12 Option 1.
Shower Recess - Desirable
Circulation space requirements
Nogging requirements

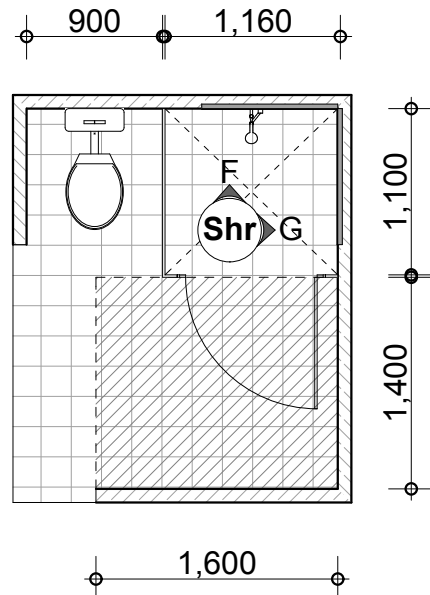


Figure 12a Option 2.
Shower Recess - Desirable
Circulation space requirements
Structural sheeting requirements

This information was sourced from the national Liveable Housing Design Guidelines produced by the National Dialogue on Universal Housing Design.