

Reinforcement of bathroom and toilet walls

Performance Statement:	The bathroom and toilet walls are built to enable grabrails to be safely and economically installed.
Essential	<ul style="list-style-type: none"> a. Except for walls constructed of solid masonry or concrete, the walls around the shower, bath (if provided) and toilet should be reinforced to provide a fixing surface for the safe installation of grabrails. b. The fastenings, wall reinforcement and grabrails combined must be able to withstand 1100N of force applied in any position and in any direction. c. The walls around the toilet are to be reinforced by installing – <ul style="list-style-type: none"> i. noggings with a thickness of at least 25mm in accordance with figures 13 and 13a; or ii. sheeting with a thickness of at least 12mm in accordance with figure 14. d. The walls around the bath are to be reinforced by installing – <ul style="list-style-type: none"> i. noggings with a thickness of at least 25mm in accordance with figures 15, 15a and 15b; or ii. sheeting with a thickness of at least 12mm in accordance with figures 16, 16a and 16b. e. The walls around the hobless (step-free) shower recess are to be reinforced by installing – <ul style="list-style-type: none"> i. noggings with a thickness of at least 25mm in accordance with figures 17 and 17a; or ii. sheeting with a thickness of at least 12mm in accordance with figure 18 and 18a.
Desirable	Essential requirements apply.

This information was sourced from the national Liveable Housing Design Guidelines produced by the National Dialogue on Universal Housing Design.

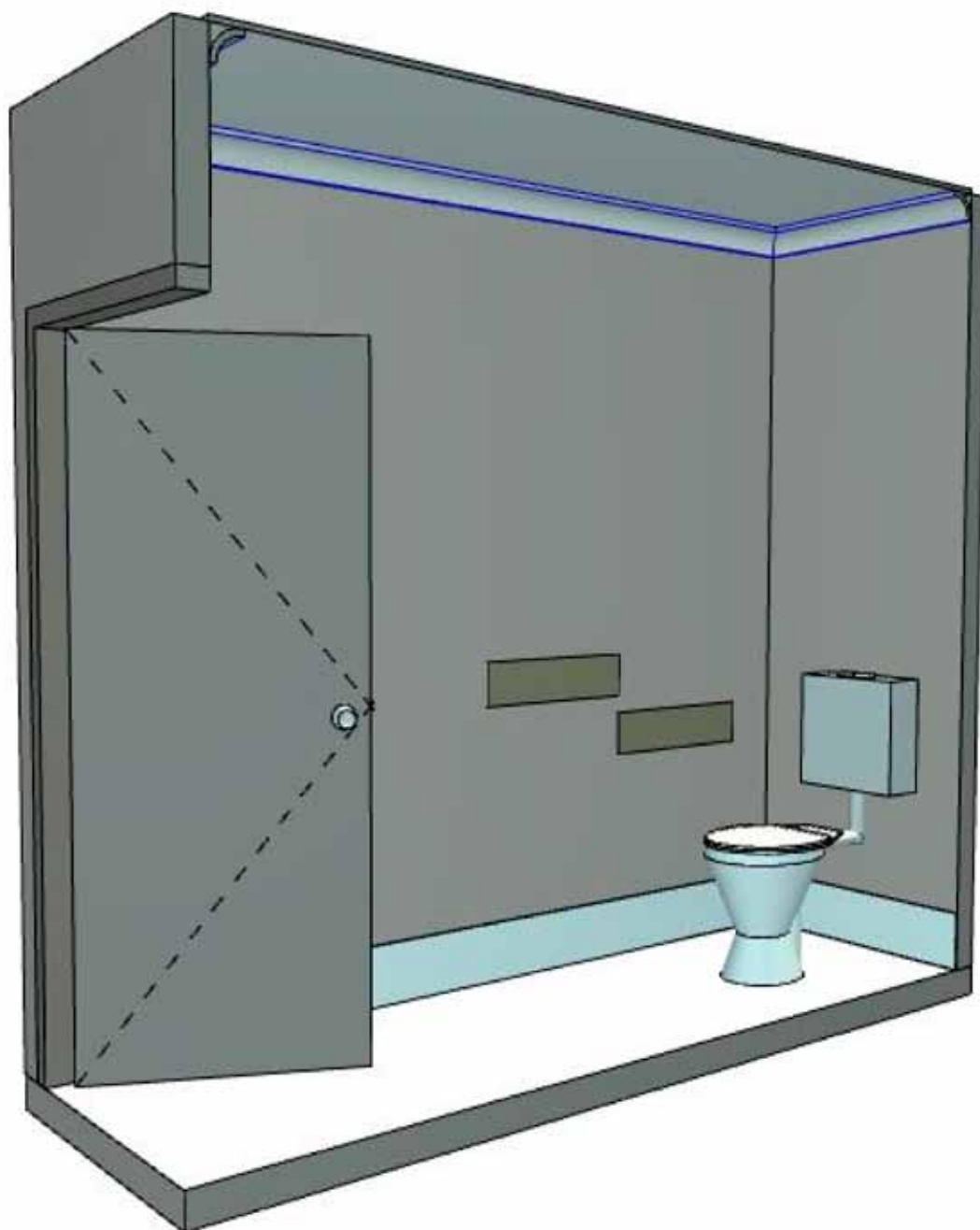


Figure 13. Toilet and nogging location perspective

This information was sourced from the national Liveable Housing Design Guidelines produced by the National Dialogue on Universal Housing Design.

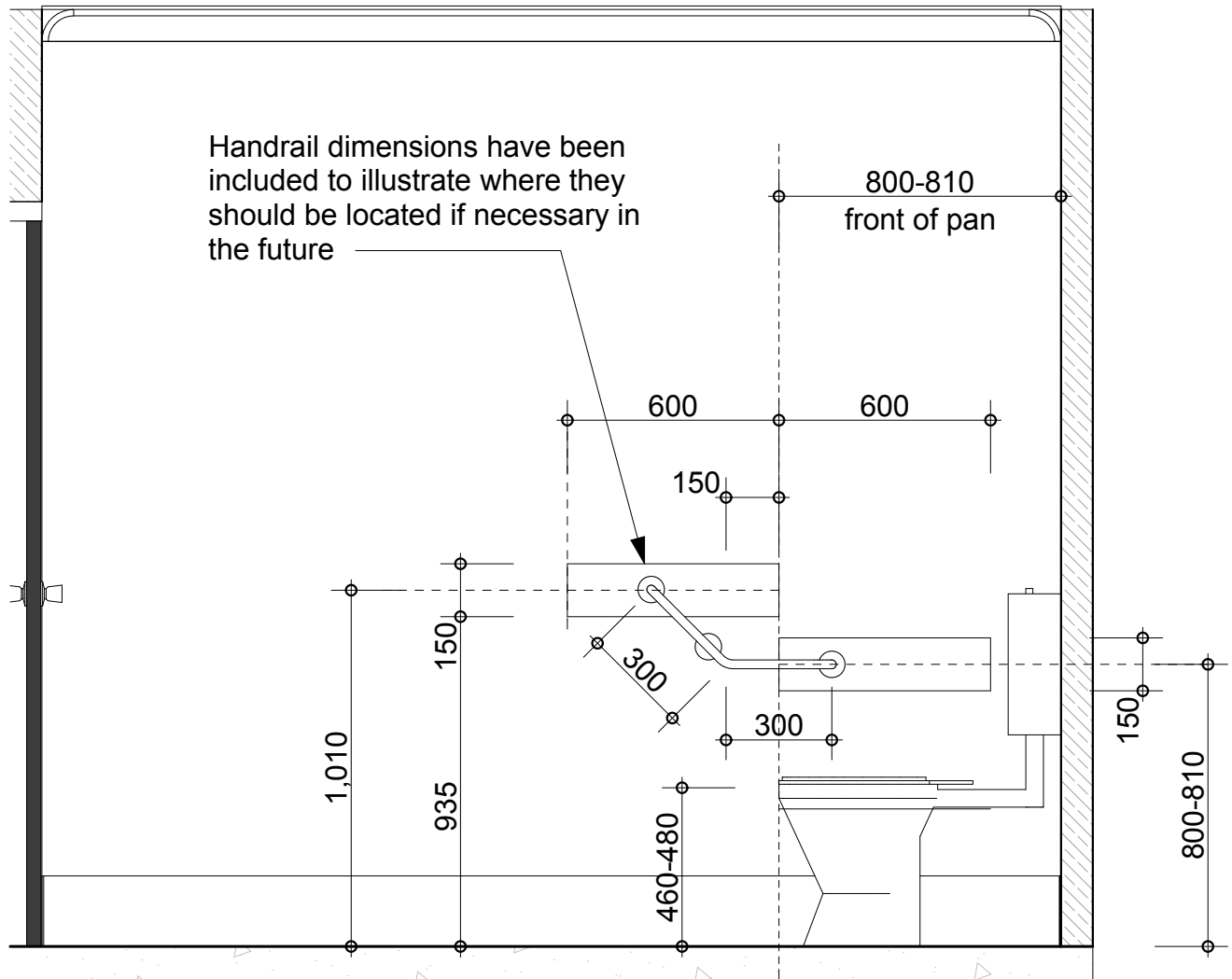


Figure 13a. Sideview (location of noggings)

Note: For the purposes of dimensioning, the front of the toilet pan has been used as the datum plane.

This information was sourced from the national Livable Housing Design Guidelines produced by the National Dialogue on Universal Housing Design.

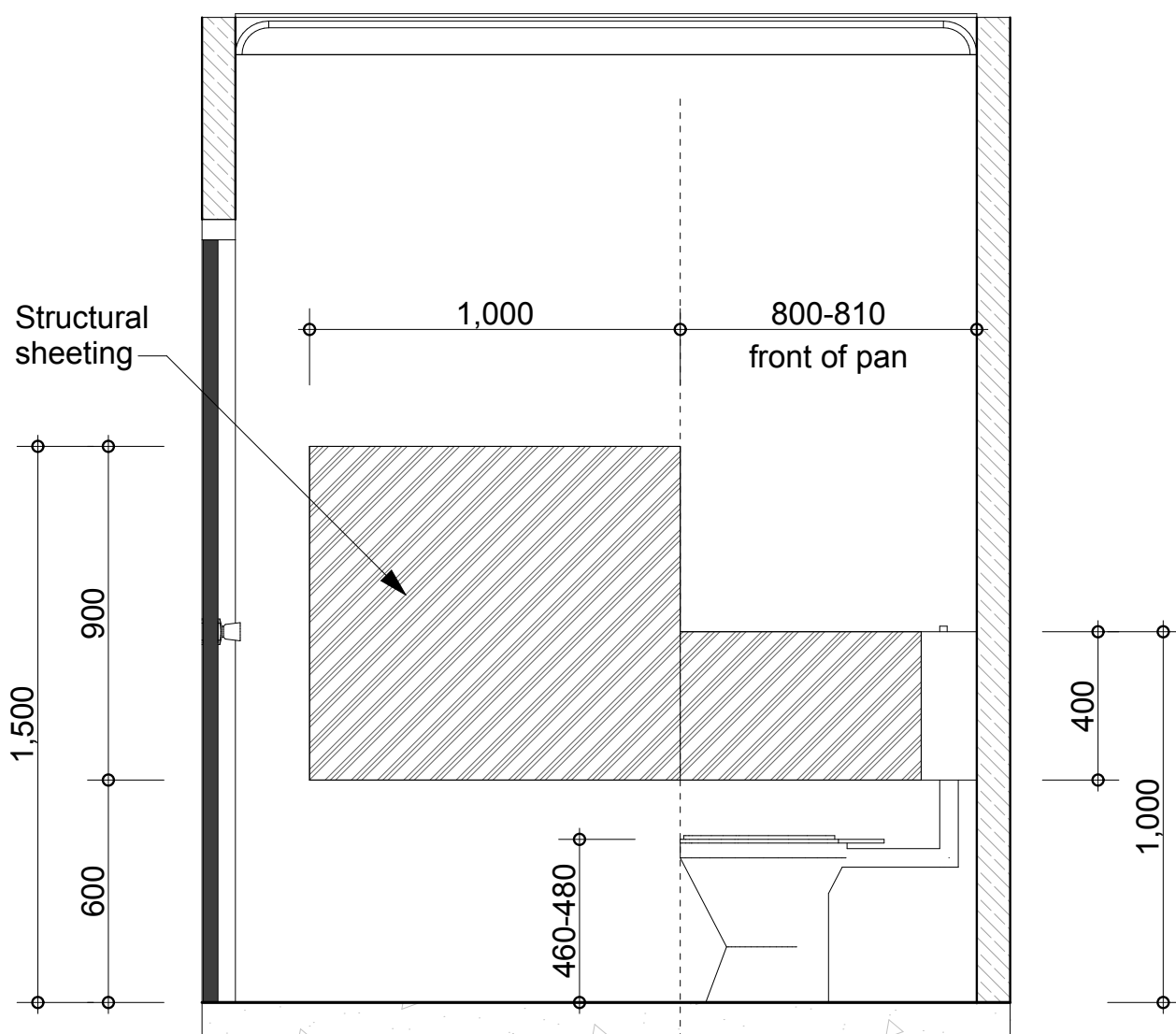


Figure 14. Sideview (location of structural sheeting)

Note: For the purposes of dimensioning, the front of the toilet pan has been used as the datum plane.

This information was sourced from the national Livable Housing Design Guidelines produced by the National Dialogue on Universal Housing Design.

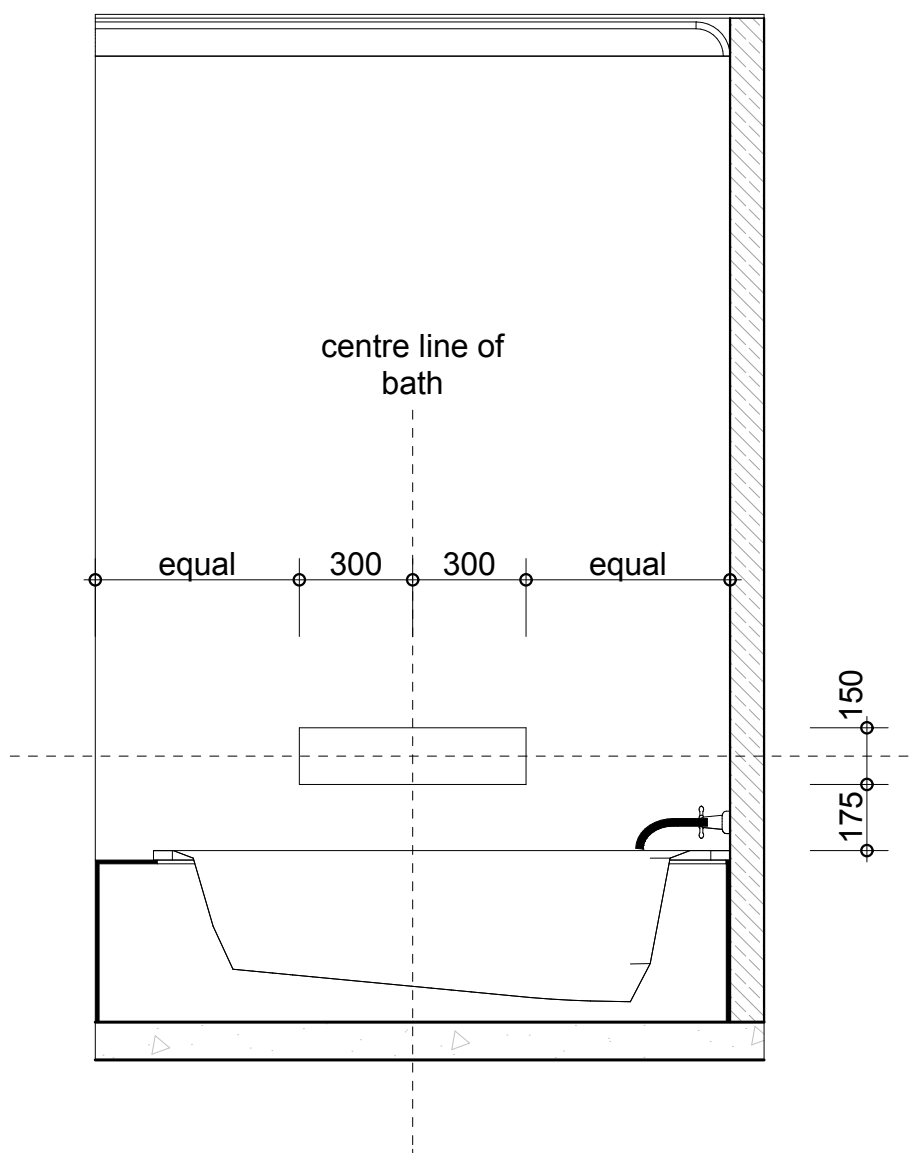


Figure 15. Bath noggling requirements

This information was sourced from the national Liveable Housing Design Guidelines produced by the National Dialogue on Universal Housing Design.

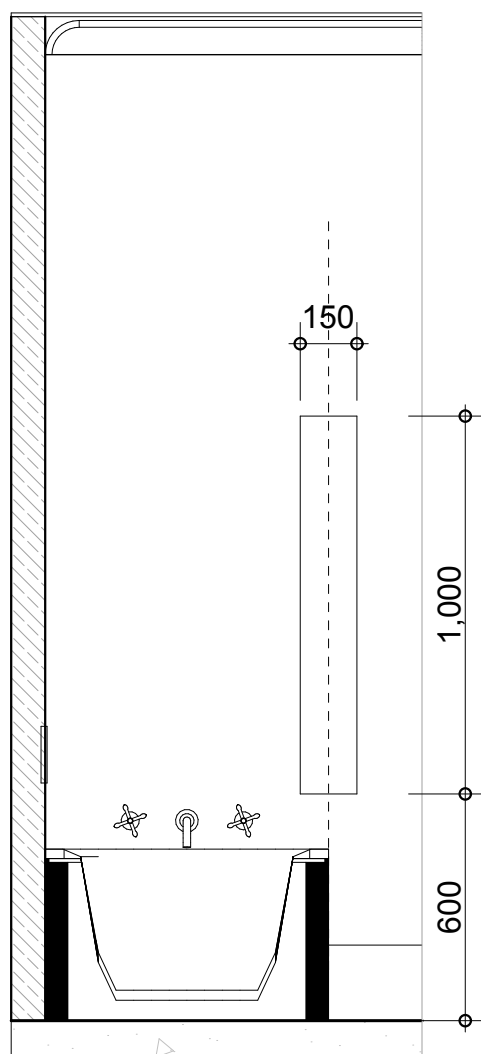


Figure 15a. Bath nogging requirements

This information was sourced from the national Livable Housing Design Guidelines produced by the National Dialogue on Universal Housing Design.

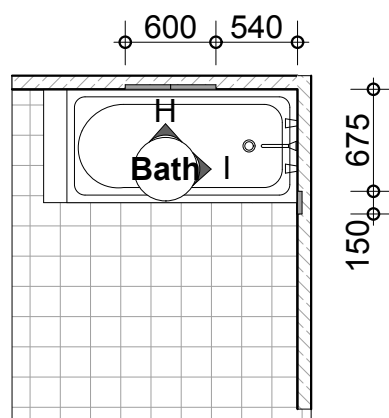


Figure 15b. Bath
Nogging requirements

This information was sourced from the national Liveable Housing Design Guidelines produced by the National Dialogue on Universal Housing Design.

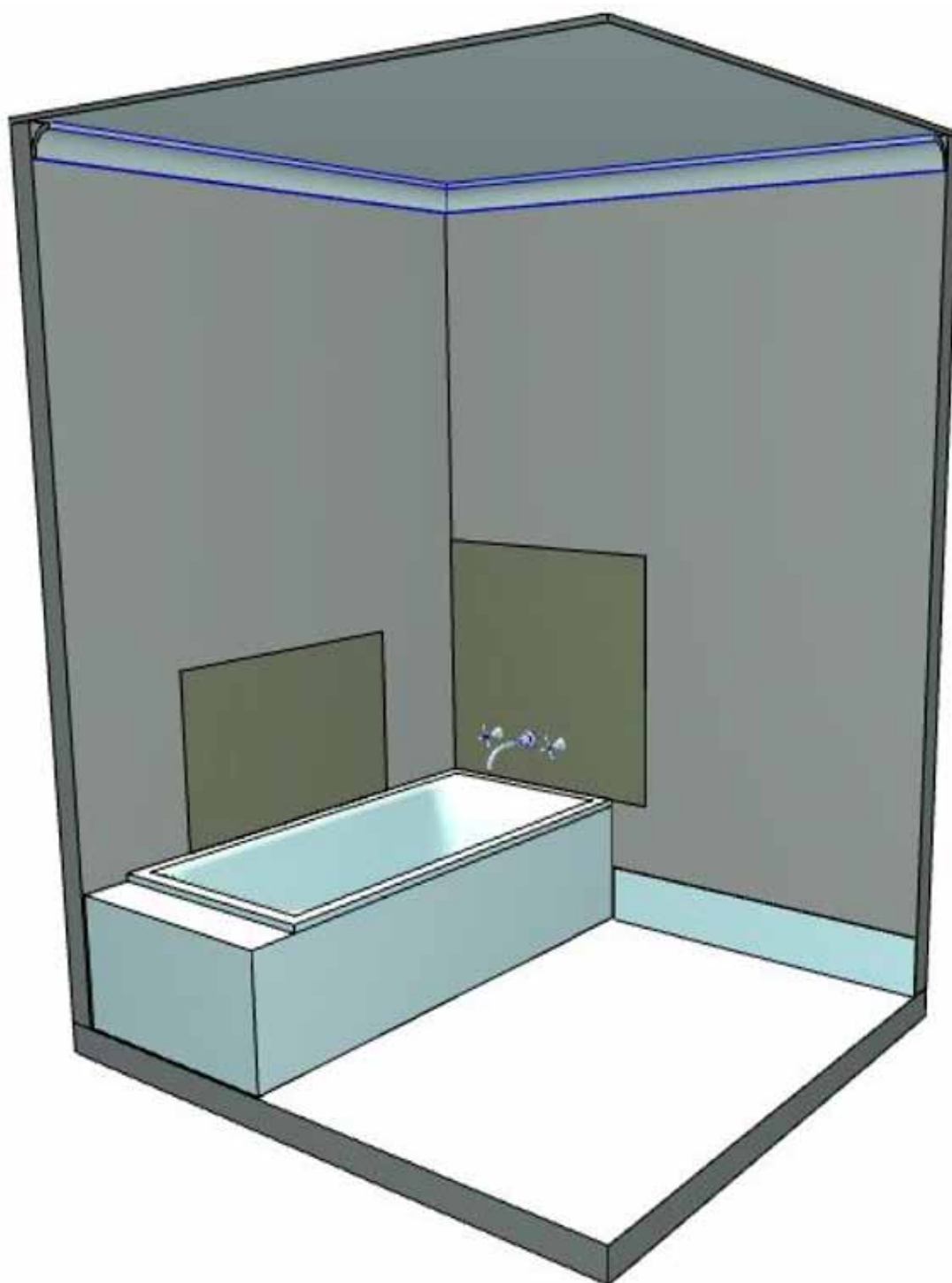


Figure 16. Bath structural sheeting perspective

This information was sourced from the national Livable Housing Design Guidelines produced by the National Dialogue on Universal Housing Design.

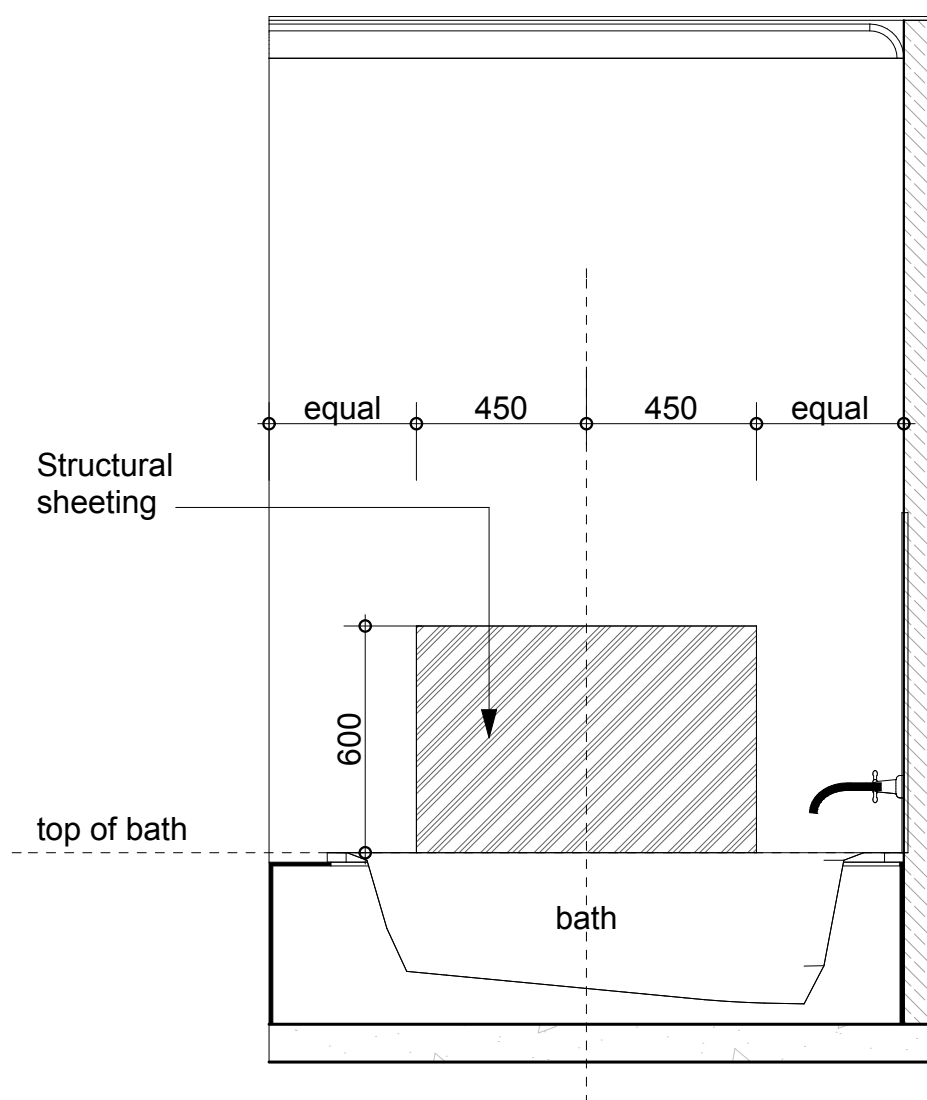


Figure 16a. Bath structural sheeting requirements

This information was sourced from the national Liveable Housing Design Guidelines produced by the National Dialogue on Universal Housing Design.

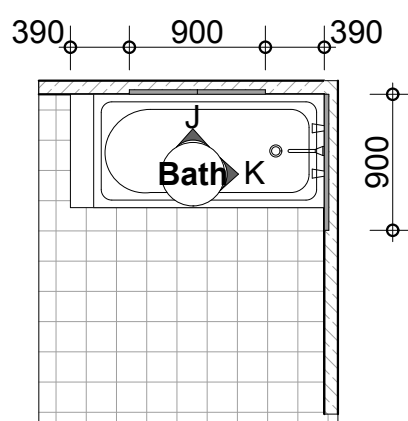


Figure 16b. Bath
Structural sheeting requirements

This information was sourced from the national Livable Housing Design Guidelines produced by the National Dialogue on Universal Housing Design.

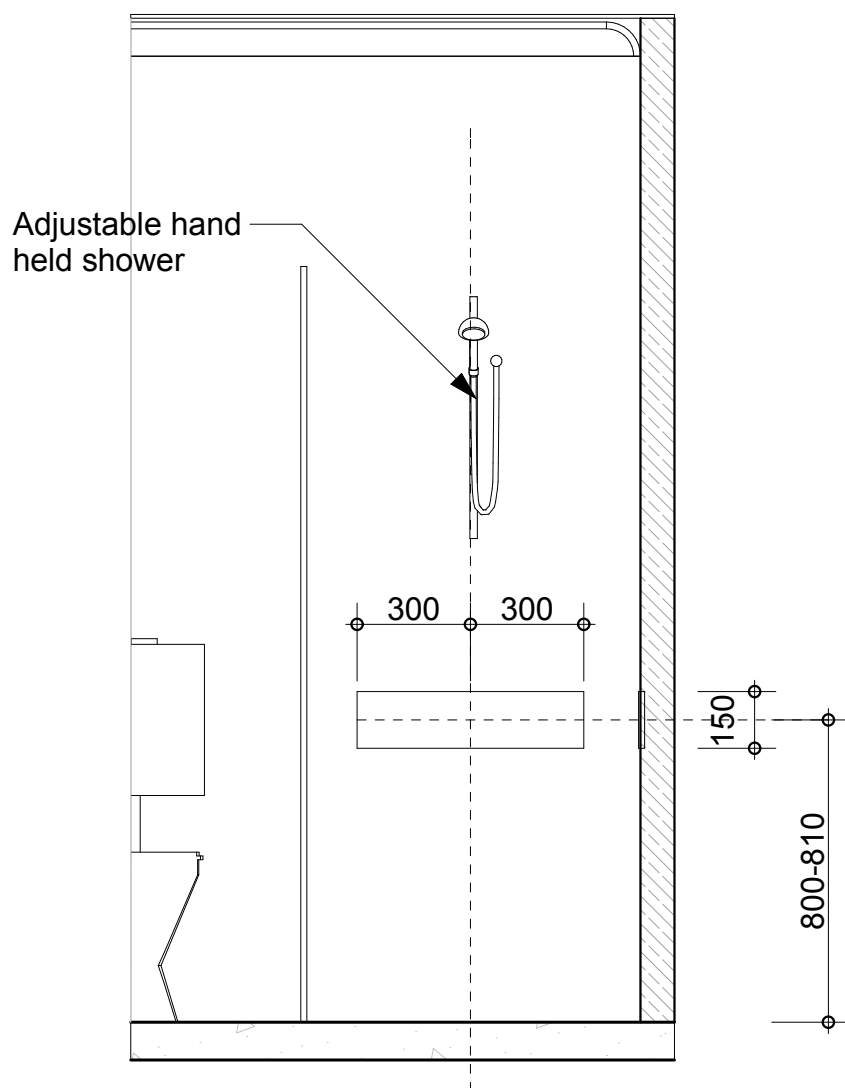


Figure 17. Shower recess and location of noggings

This information was sourced from the national Liveable Housing Design Guidelines produced by the National Dialogue on Universal Housing Design.

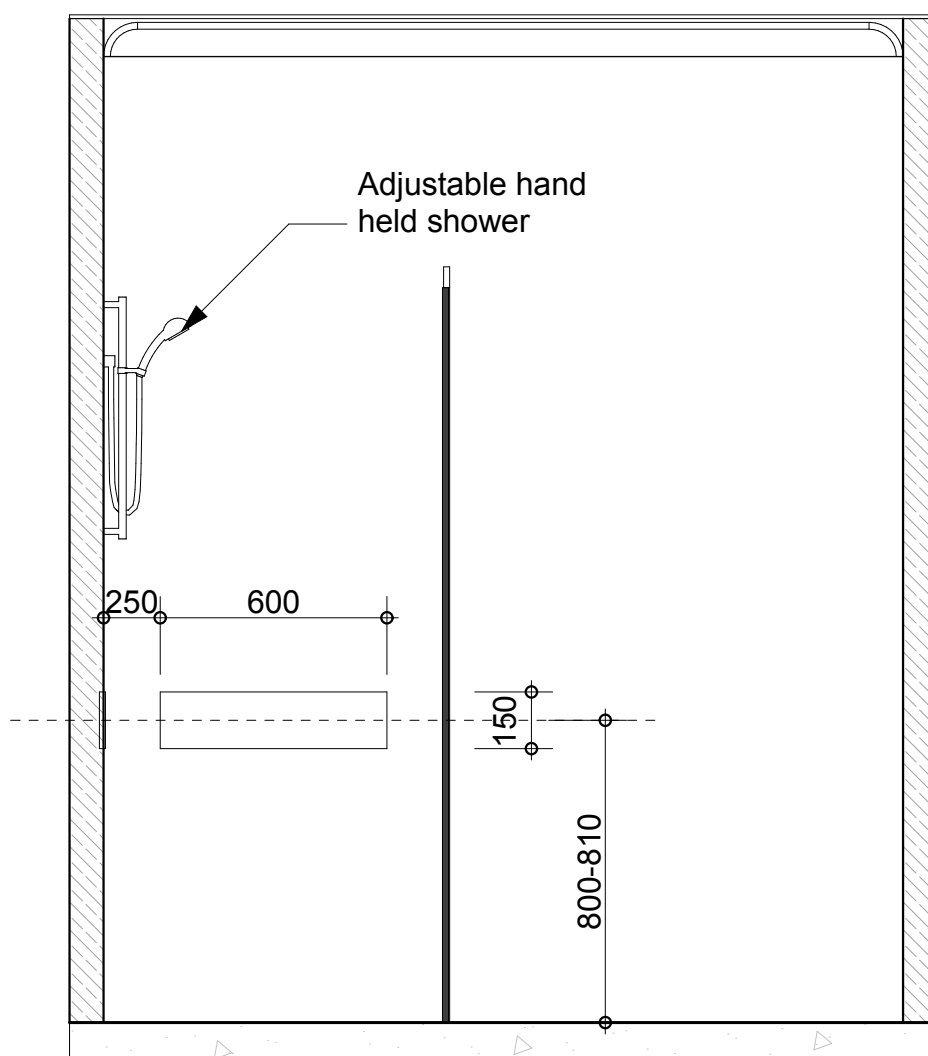


Figure 17a. Shower recess and location of noggings

This information was sourced from the national Livable Housing Design Guidelines produced by the National Dialogue on Universal Housing Design.

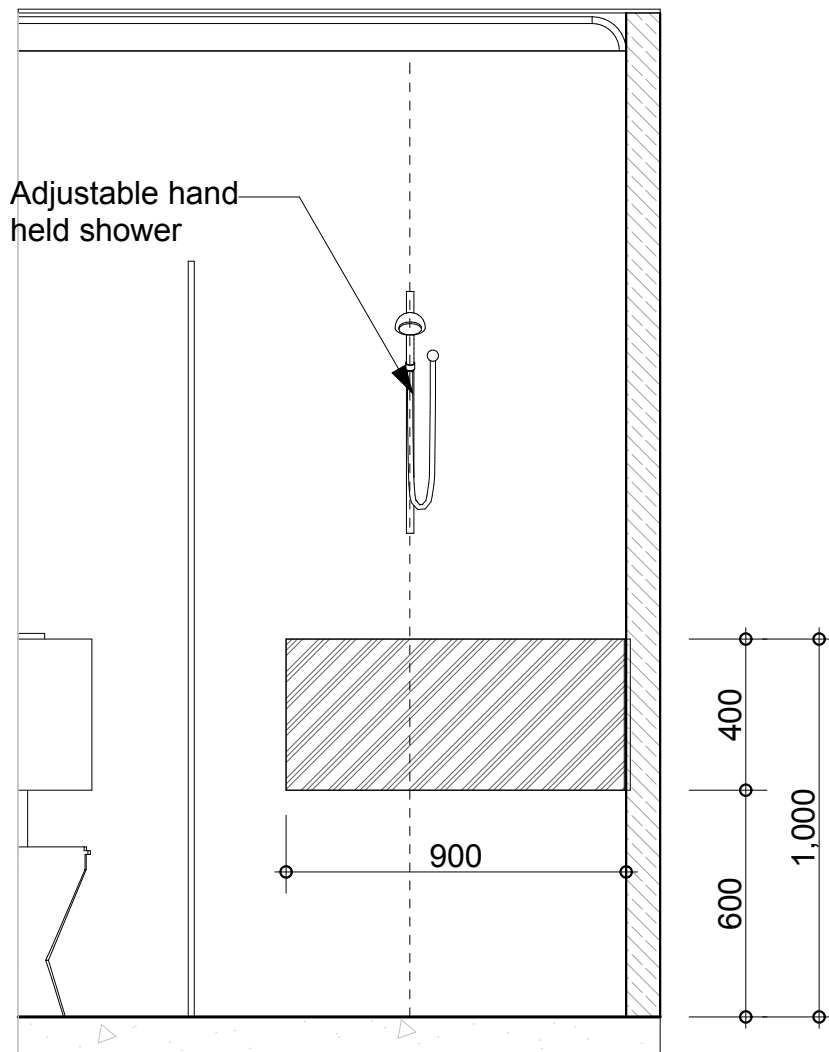


Figure 18. Shower recess and location of structural sheeting

This information was sourced from the national Livable Housing Design Guidelines produced by the National Dialogue on Universal Housing Design.

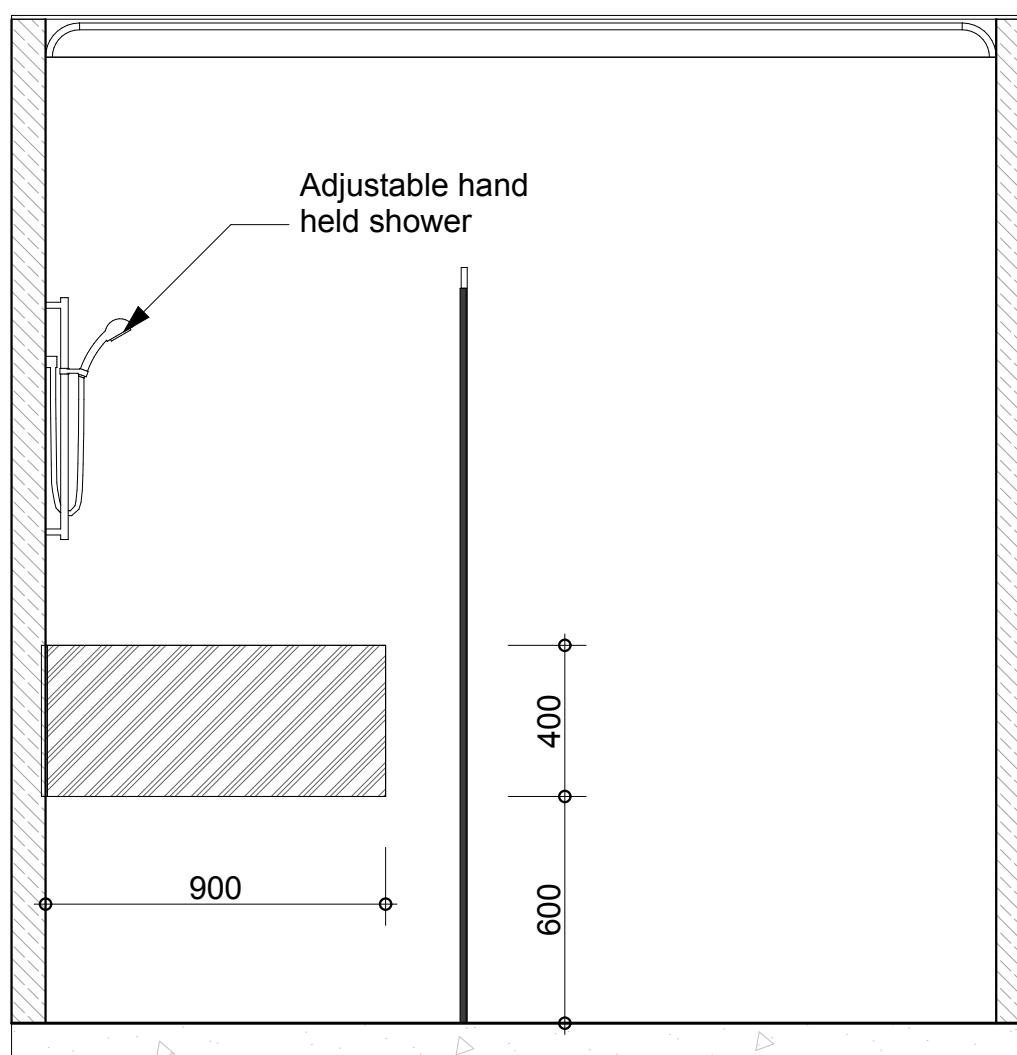


Figure 18a. Shower recess and location of structural sheeting

This information was sourced from the national Livable Housing Design Guidelines produced by the National Dialogue on Universal Housing Design.