

Ground (or entry level) Bedroom

Performance Statement:	There is a space on the ground (or entry) level that can be used as a bedroom.
Essential	No requirements.
Desirable	<p>The dwelling features a space (or room) on the ground (or entry) level that:</p> <ul style="list-style-type: none">i. is of at least 10m² with one wall a minimum length of 3m;ii. provides for a minimum path of travel of at least 1000mm on at least one side of the bed. See figures 21 and 21a.

This information was sourced from the national Livable Housing Design Guidelines produced by the National Dialogue on Universal Housing Design.



Figure 21. Bedroom perspective

This information was sourced from the national Livable Housing Design Guidelines produced by the National Dialogue on Universal Housing Design.

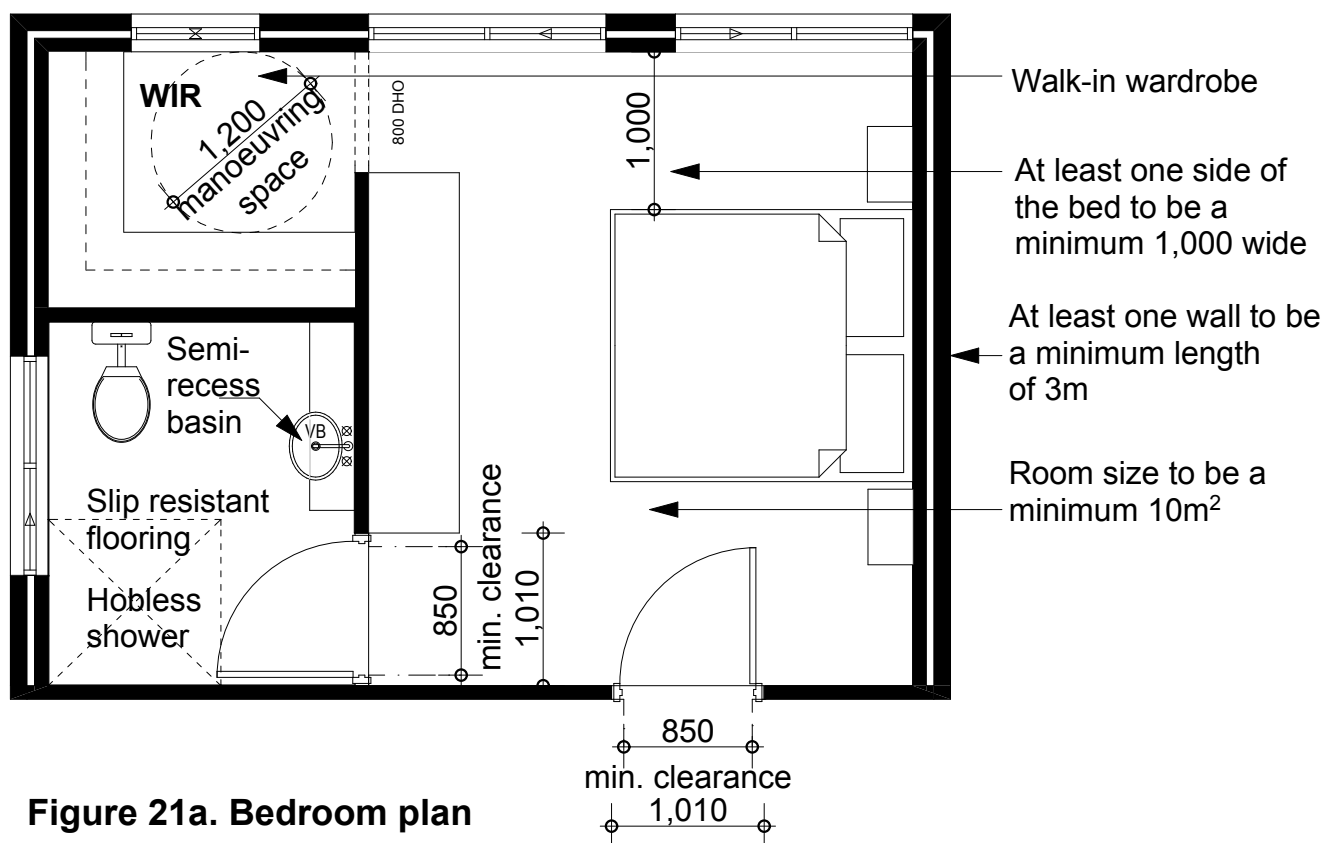


Figure 21a. Bedroom plan

This information was sourced from the national Liveable Housing Design Guidelines produced by the National Dialogue on Universal Housing Design.