

Switches and powerpoints

| | |
|-------------------------------|--|
| Performance Statement: | Light switches and powerpoints are located at heights that are easy to reach for all home occupants. |
| Essential | No requirements. |
| Desirable | <ul style="list-style-type: none">a. Light switches should be positioned in a consistent location -<ul style="list-style-type: none">i. between 900mm – 1100mm above the finished floor level; andii. horizontally aligned with the door handle at the entrance to a room.b. Powerpoints should be installed not lower than 300mm above the finished floor level. See figure 23. |

This information was sourced from the national Livable Housing Design Guidelines produced by the National Dialogue on Universal Housing Design.

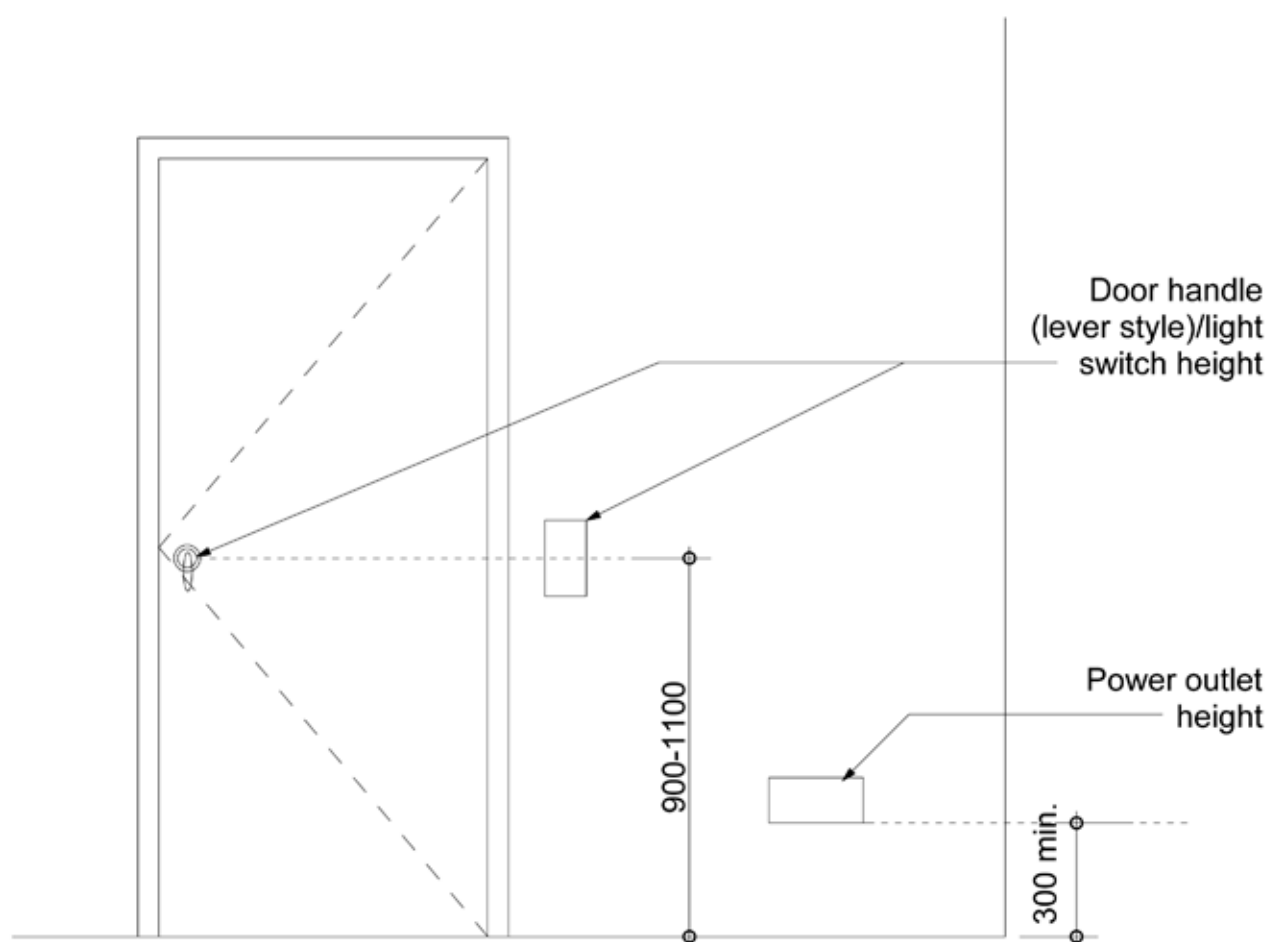


Figure 23. Switches, powerpoints and door handles - Desirable

This information was sourced from the national Livable Housing Design Guidelines produced by the National Dialogue on Universal Housing Design.